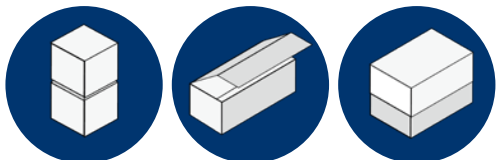


# BOX LINE TAPER

Automatic production of raw boxes  
from cardboard blanks

Sealing tape machine BLT 200



BLT 200  
up to 40  
products/min



Technical data



# KOLBUS BOX LINE TAPER BLT 200

## Benefits:

- **The machine is used for uprighting punched and grooved cardboard**
- **Coupled in-line with BLW 200 Wrapper**
- **Fold-up station**
- **4 hot sealing tape applicators**
- **Automated format set-up**

## Standard equipment BLT 200

- Copilotsystem mit Touchscreen
- Choice of production mode
- Operator guided production changes
- Automatic format settings
- Operating instructions
- Product counter (Job, shift and start/stop counter)
- Indication of machine and material flow malfunctions
- Operator guided malfunction elimination
- Cardboard feeder
- Upright channel
- 1 set of format variable reinforcement rails for safe uprighting of the box
- 4 heat seal band stations
- 4 x heat-sealing tape width guide set for processing 22 mm wide heat-sealing tape
- 4 x roll holders for heat-sealing tape on the outside of the machine for changing rolls during production
- 2 sets of knives (4 pcs. each)
- 2 sets of counter cutters (4 pcs. each)
- Delivery height 1,000 mm
- Servo-controlled drive technology based on Siemens SIMOTION D
- Smart Line Module for feeding back drive energy into the production line net-work
- Safety standard in accordance with EC directives and standards

## Remote Service Gateway / Coupling with type RSG 800

- Remote Service Gateway / Coupling with type RSG 800.B



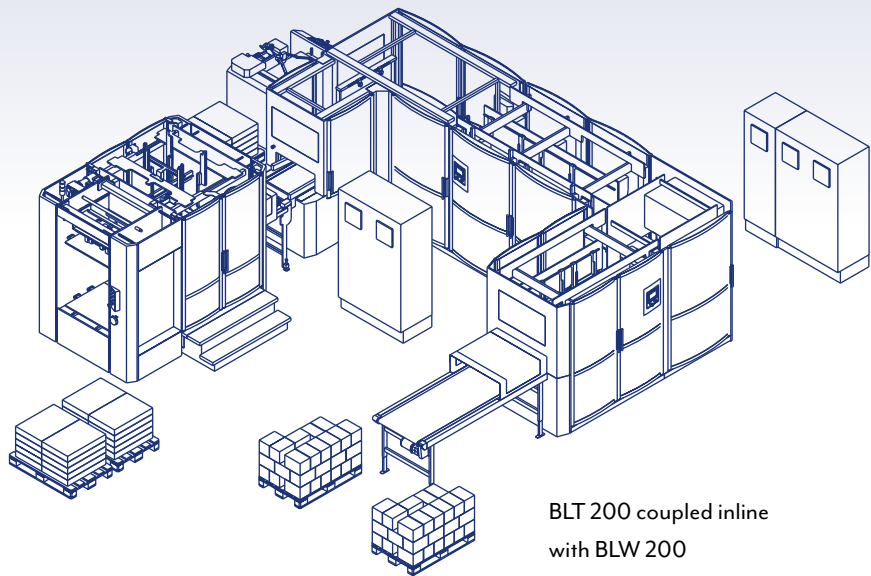


BLT 200 and Box Line Wrapper BLW 200 for forming and laminating boxes

**Alternative equipment**

**Delivery unit**

- Inline coupling with Box Line Wrapper, type BLW 200
- Delivery via conveyor belt, type KT.L 700
- Dimensions of KT.L 700:  
Length 1500 mm, Width 750 mm, Height 1000 mm  
(Delivery unit to be provided by customer)



BLT 200 coupled inline with BLW 200

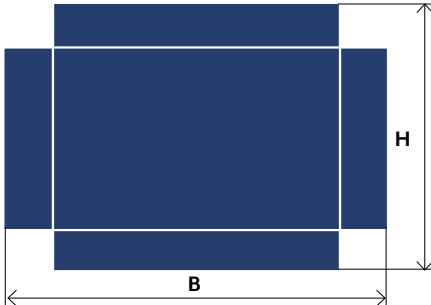


Box Line Taper BLT 200

## Technical data

### Size range cardboard blanks

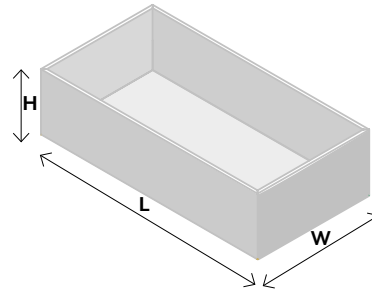
- o Height cardboard H: min. 86 mm / max. 525 mm
- o Width cardboard W: min. 86 mm / max. 735 mm
- o Thickness cardboard: min. 1 mm / max. 3 mm



### Size range box

- o Length box L: min. 56 mm / max. 570 mm
- o Width box W: min. 56 mm / max. 360 mm
- o Height box H: min. 20 mm / max. 170 mm
- o Thickness: min. 1.0 mm / max. 3.0 mm

The interior dimensions of the box depend on the cardboard thickness



### Mechanical speed:

- o up to 40 cycles/min
  - o for box height > 135 mm/max. 25 cycles/min
- Net production is subject to sizes, materials etc.

### The customer has to provide:

- o Factory line pressure 6 bar
- o Compressed air supply see extra sheet

### Electrical equipment:

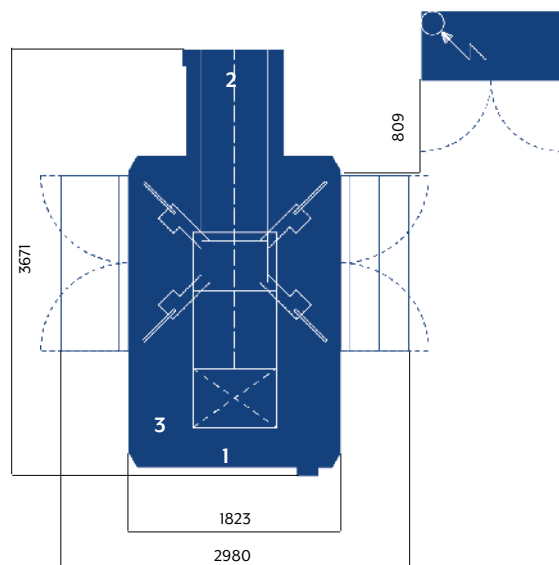
- o 3 phase, 400 volt / N / PE, 50 cycles

### Machine dimensions

- o Length 3,700 mm
- o Width 3,000 mm
- o Höhe 2,700 mm

**Weight** 8.500 kg

### Footprint BLT 200



- 1 Infeed board blanks BLT 200
- 2 Delivery with infeed into BLW 200
- 3 Connection compressed air