

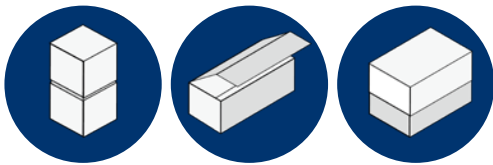
# BOX LINE WRAPPER

Box gluing with new wrapping technology

Model changeover without changing the forming tools

Design: rigid box packaging from cardboard

Box Line Wrapper BLW 200



BLW 200  
up to 40  
products/min



Technical data

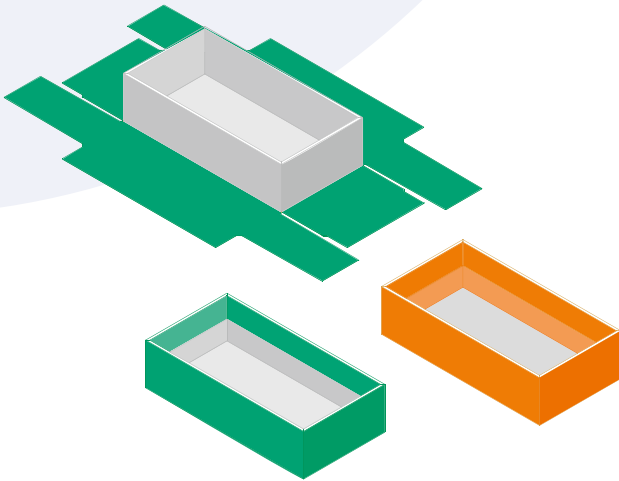


# KOLBUS BOX LINE WRAPPER BLW 200

The machine is used for laminating boxes

## Benefits:

- Simple computerised operation
- Innovative technology based on forming plates
- Higher quality
- Higher productivity, no complex retooling



## Basic equipment BLW 200

- Copilotsystem mit Touchscreen
  - Choice of production mode
  - Job memory
  - Operator guided production changes
  - Automatic format adjustment
  - Operating instructions
  - Fine adjustments via +/- keys during running production
  - Product counter (Job, shift and start/stop counter)
  - Indication of machine and material flow malfunctions
  - Operator guided malfunction elimination

## Cloth feeder

- Gluing station for processing hot-glue with premelter
  - Glue application adjustment from outside the machine
  - Viscosity control
- Buffer area for the feeding of the boxes
- Cloth transport with vacuum belt
- Camera system for precise placement of the boxes on the cloth

## Robot for positioning the boxes on the cloth

- Automatic corrections during production
- Rub down station

## Four laminating stations for laminating boxes

- Inline coupling with Box Line Former, model BLF 500
- Delivery with conveyor belt (height 1,000 mm)
- 20 format plates (1480 mm x 173 mm x 18 mm)
- Servo-controlled drive technology based on Siemens
- All quality-relevant elements with separate servo drive
- Smart Line Module for feeding drive energy back into the line network
- Safety standard according to CE directives and specifications

## Remote Service Gateway / Coupling with model RSG 800

- Remote Service Gateway / Coupling with model RSG 800.B



Box Line Wrapper BLW 200



BLW 200 – Operator guided production changes via Copilotsystem

Display: Main panel,  
Operating panel  
for wrapping left side

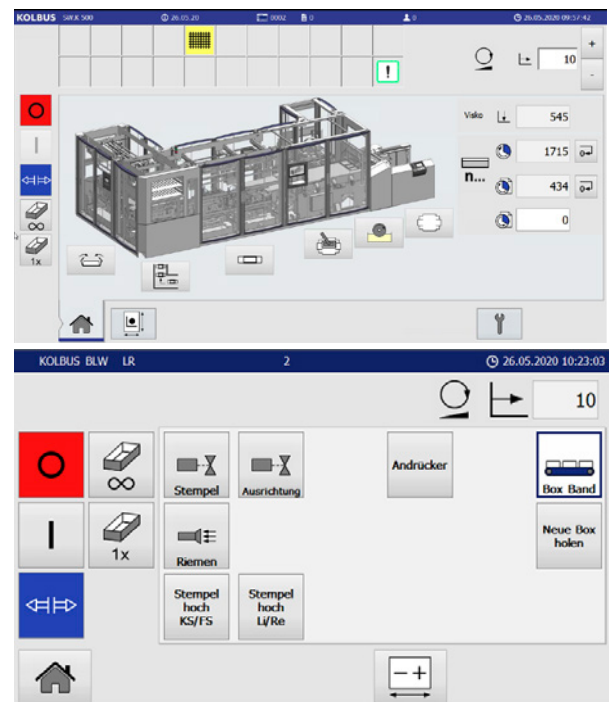
### Expansion of the equipment

#### Infeed

- Manual feeding
- Inline coupling with Box Line Taper BLT 200
- Electrical connection for voltage supply and control of an upstream belt

#### Delivery unit

- Delivery via conveyor belt, type KT.L 700  
Dimensions of KT.L 700  
Length 3,000 mm, Width 750 mm, Height 1,000 mm
- Additional format plate
- Set-up for boxes with wide edge turn-in



Optional: Inline coupling with Box Line Taper BLT 200

## Technical data

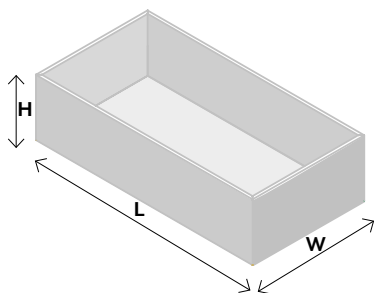
### Size range Box

- Length box L: min. 56 mm | max. 570\* mm
- Width box W: min. 56 mm | max. 360\* mm
- Height box H: min. 15 mm | max. 170\* mm
- Thickness board: min. 1 mm | max. 3 mm  
depending on material and format

\*The maximum box length, box width and box height are interdependent. The following applies:

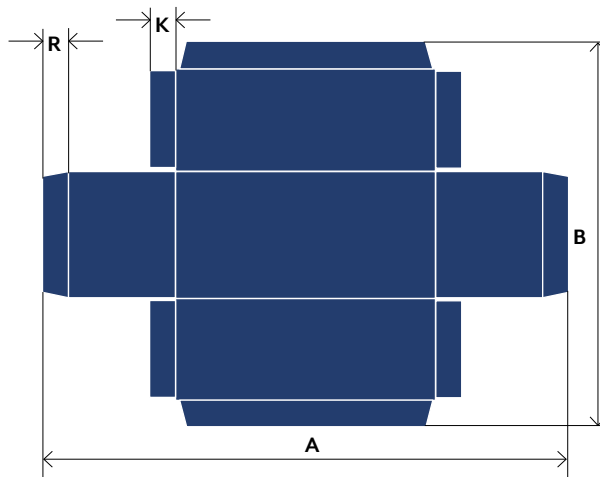
$$L = 2 \times H + L \leq 735 \text{ mm and } W = 2 \times H + W \leq 525 \text{ mm}$$

The interior dimensions of the box depend on the cardboard thickness



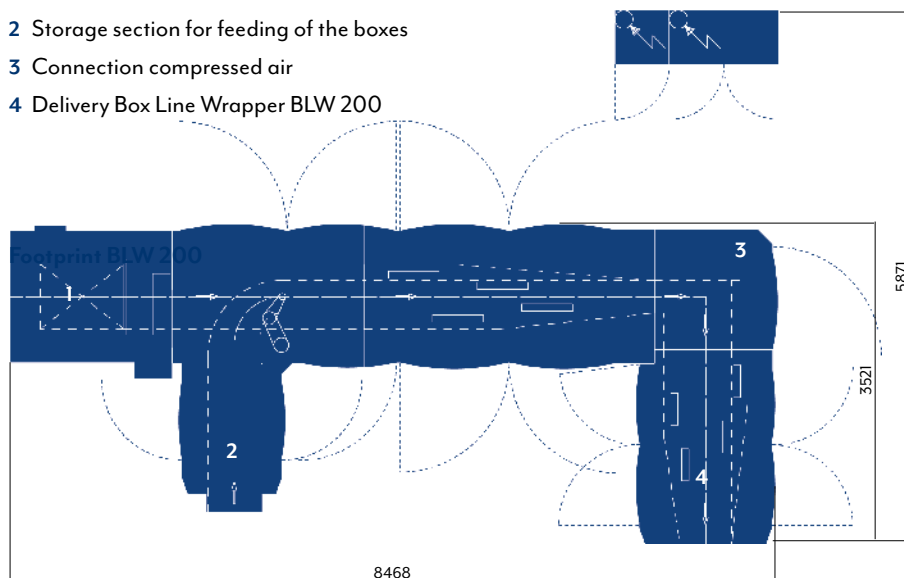
### Size range cloth

- Length cloth A: min. 120 mm | max. 815 mm
- Width cloth B: min. 120 mm | max. 605 mm
- Wrap dimension R: min. 15 mm | max. 85 mm
- Side wrap dimension K: min. 15 mm | max. 85 mm



### Footprint BLW 200

- Cloth feeder BLW 200
- Storage section for feeding of the boxes
- Connection compressed air
- Delivery Box Line Wrapper BLW 200



### Mechanical speed

- up to 40 cycles/min
- For box height > 135 mm: max.: 25 cycles/min

**Net production is subject to sizes and materials**

### The customer has to provide:

- Compressed air requirement
- 30 Nm<sup>3</sup>/h
- Factory line pressure 6 bar
- Compressed air supply see extra sheet

### Electrical equipment:

- 3 phase, 400 volt / N / PE, 50 cycles

**Weight:** 12.540 kg